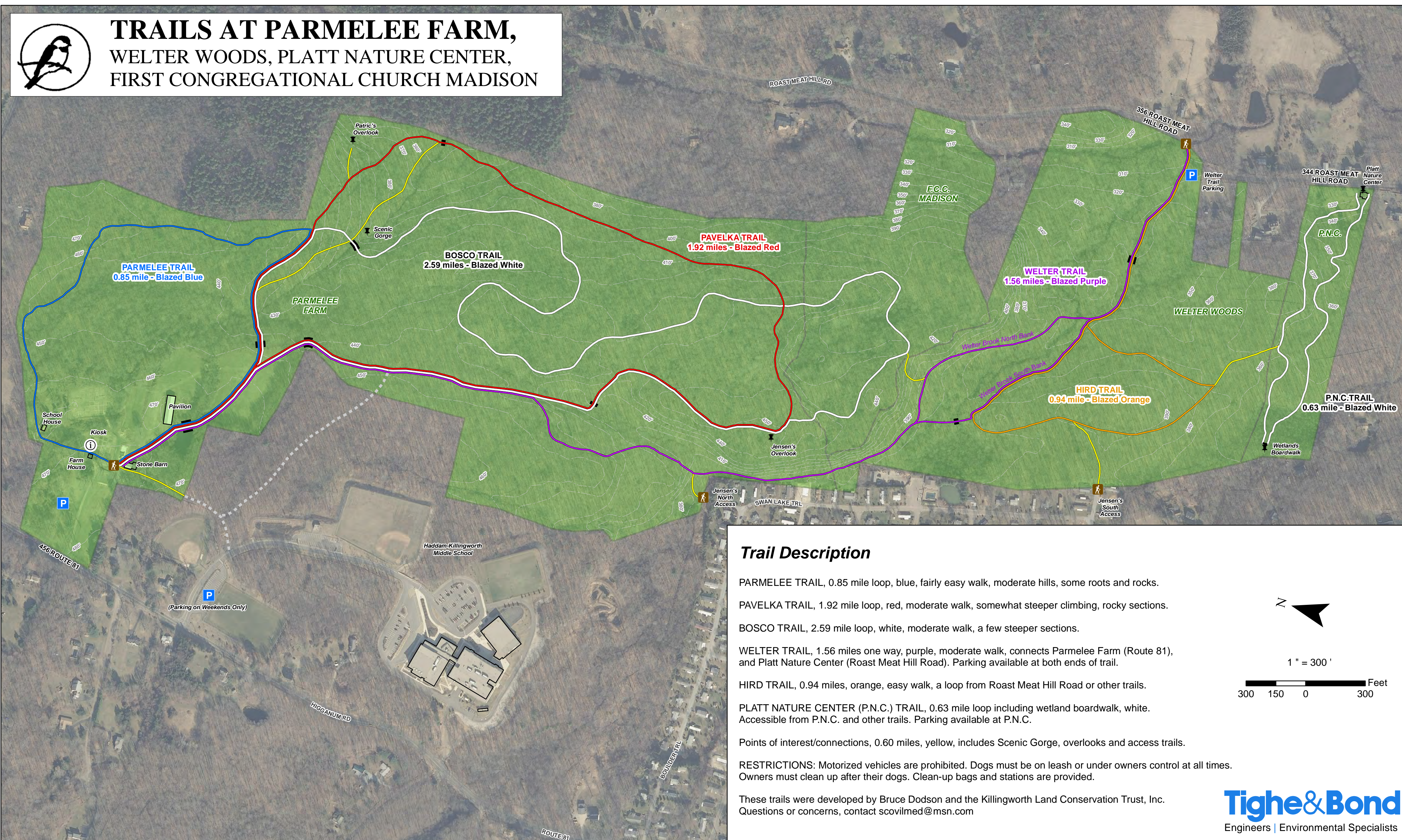




# TRAILS AT PARMELEE FARM, WELTER WOODS, PLATT NATURE CENTER, FIRST CONGREGATIONAL CHURCH MADISON



## Trail Description

PARMELEE TRAIL, 0.85 mile loop, blue, fairly easy walk, moderate hills, some roots and rocks.

PAVELKA TRAIL, 1.92 mile loop, red, moderate walk, somewhat steeper climbing, rocky sections.

BOSCO TRAIL, 2.59 mile loop, white, moderate walk, a few steeper sections.

WELTER TRAIL, 1.56 miles one way, purple, moderate walk, connects Parmelee Farm (Route 81), and Platt Nature Center (Roast Meat Hill Road). Parking available at both ends of trail.

HIRD TRAIL, 0.94 miles, orange, easy walk, a loop from Roast Meat Hill Road or other trails.

PLATT NATURE CENTER (P.N.C.) TRAIL, 0.63 mile loop including wetland boardwalk, white. Accessible from P.N.C. and other trails. Parking available at P.N.C.

Points of interest/connections, 0.60 miles, yellow, includes Scenic Gorge, overlooks and access trails.

RESTRICTIONS: Motorized vehicles are prohibited. Dogs must be on leash or under owners control at all times. Owners must clean up after their dogs. Clean-up bags and stations are provided.

These trails were developed by Bruce Dodson and the Killingworth Land Conservation Trust, Inc. Questions or concerns, contact [scovilmed@msn.com](mailto:scovilmed@msn.com)

